



PALADIN
STRIKEFORCE

STRIKEFORCE™ OVERVIEW

**Selection,
Innovation,
Performance**

Your One-Stop Shop
for Hydraulic Tools
and Attachments



POWERFUL OPERATIONS FOR MAXIMUM PRODUCTION





The StrikeForce™ family of tools has been specifically developed to support the needs of general contractors, whose primary task is the efficient completion of challenging work in the most cost effective manner possible. The StrikeForce line of powerful tools are designed to provide low maintenance and repair costs, maximum productivity, and a safe, responsible worksite environment. This combination delivers the lowest operating cost and highest customer value in the industry.

COMPACT & SMALL MOUNTED BREAKERS

COMPACT



SMALL



Strike Force™ Compact Mounted Breakers provide the optimal combination of breaker power and frequency for the jobs faced by today's compact tool carrier and mini-excavator machines. These products pack the punch necessary to easily break concrete up to 10 inches thick, and can be used in confined spaces that larger breakers cannot reach.

Strike Force™ Small Mounted Breakers provide cost effective options, and a flexible mounting system allowing installation onto multiple types of machines. These are truly versatile tools that add value to any contractor's toolbox. These breakers are typically tasked with doing general activities in road construction, utility installation, light demolition, and building construction.

Typical Applications

- Structure demolition
- Utility excavation
- Trenching
- Road building
- Quarry crusher support
- Mine site maintenance
- Swimming pools

SPECIFICATIONS

	UNITS	SFB250	SFB350	SFB500	SFB750	SFB1000	SFB1500
Working Weight	(lbs)	297	414	573	639	908	1245
Impact Energy Class	(ft. lbs.)	250	350	550	750	1000	1500
"Impact Rate (BPM)"	-	700~1500	450~1150	650~1550	600~1100	450~750	400~750
Operating Pressure	(psi)	1305~1740	1305~1885	1450~1030	1595~2175	1377~1880	1800~2175
Relief Pressure	(psi)	2320~2610	2320~2610	2900~3045	2900~3045	2320~2610	2320~2610
Oil Flow Range	(gal/min)	4.0~9.2	6.6~11.9	10.0~21.9	11.9~21.9	10.6~21.1	11.9~22.5
Tool Diameter	(in)	1.56	2.15	2.64	2.65	2.95	3.35
Pressure Line Size	(mm (in))	12 (½)	12 (½)	19 (¾)	19 (¾)	12 (½)	19 (¾)
Return Line Size	(mm (in))	12 (½)	12 (½)	19 (¾)	19 (¾)	12 (½)	19 (¾)
Prime Mover Weight	(lbs)	2200~6614	4400~9900	4630~7055	4400~9900	9900~19800	15400~26400
Machine Class	(mT)	0-3	2-5	3-5	3-8	5-8	8-12

MEDIUM & LARGE RANGE BREAKERS

MEDIUM



LARGE



Strike Force™ Medium Breakers give the contractor a range of demolition and construction tools to address tasks commonly found on the job site. These tools combine power and blow rate to deliver optimum breaking performance in tasks such as utility trenching or site preparation.

Strike Force™ Large Breakers give the punch needed to break through any obstacle. These breakers combine the power needed for heavy rock breaking and the speed needed for demolition and general construction work.

Typical Applications

- Reinforced structure demolition
- Utility excavation
- Trenching
- Road building
- Quarry crusher support
- Tunneling

SPECIFICATIONS

	UNITS	SFB2K	SFB3K	SFB4K	SFB5K	SFB6K	SFB8K	SFB10K	SFB12K
Working Weight	(lbs)	2156	3258	4011	4400	5430	5975	6996	8580
Impact Energy Class	(ft. lbs.)	2000	3000	4000	5000	6000	8000	10000	12000
"Impact Rate (BPM)"		400~750	350~650	350~600	350~500	300~450	300~450	250~400	200~400
Operating Pressure	(psi)	2030~2320	2175~2465	2320~2610	2320~2610	2320~2610	2320~2610	2320~2610	2320~2610
Relief Pressure	(psi)	2755~2900	2755~2900	2900~3045	2900~3045	2900~3045	2900~3045	2900~3045	2900~3045
Oil Flow Range	(gal/min)	21.1-29	23.7~31.7	26.4~39.6	31.7~47.6	39.6~55.5	47.6~63.4	52.8~68.7	66.0~79.3
Tool Diameter	(in)	3.90	4.92	5.27	5.46	5.85	6.05	6.44	7.02
Pressure Line Size	(mm (in))	19 (¾)	25 (1)	25 (1)	25 (1)	25 (1)	32 (1¼)	32 (1¼)	32 (1¼)
Return Line Size	(mm (in))	19 (¾)	25 (1)	25 (1)	25 (1)	25 (1)	32 (1¼)	32 (1¼)	32 (1¼)
Prime Mover Weight	(lbs)	24200-35200	35200~39600	35200~46200	39600~57200	55100~66000	61600~77000	66000~99000	88100~121300
Machine Class	(mT)	10-12	12-15	15-20	15-25	25-27	27-35	27-45	35-45

BREAKER FEATURES

SFB250/350 Compact Breakers

Flat-top adapter mounting: Gives the flexibility to use the breakers on multiple machines. Paladin has a complete line of adapters to suit compact tool carriers and mini excavators, to support this breaker segment. If customized adapter systems are required, Paladin can support with the industry's most extensive adapter product design capability.

High power to weight ratio: From industry leading impact power and effective side plate structure design.

Safety: Removes the operator from direct contact with the breaking work, protecting your worker or yourself from injury.

Hydraulic shock absorption: The breaker design includes a hydraulic energy absorption system to reduce shocks from being transmitted to the breaker and carrier, protecting both of these investments.

Heavy duty side plates: Rugged and wear resistant to ensure durability even in the most abrasive and abusive applications.

Rotatable bushings: Provides multiple wear surfaces, which when used, protect the breaker tool bit and bushings, reducing replacement requirements and cost.

SFB500/750 Small Breakers

Dual mounting option: Flat top and Pin-on, with mini-excavators and SSL adapters to maximize fleet flexibility and minimize owning cost.

High power to weight ratio: From industry leading impact power and effective side plate structure design.

SSL mounting: Available for standard SAE SSL interfaces in either single or multi-position adapter options.

StrikeForce adapter pattern: A common adapter pattern, with other StrikeForce tools in the same weight class, maximizes flexibility in use of adapter systems, minimizing owning costs.

Safety: Removes the operator from direct contact with the breaking work, protecting your worker or yourself from injury.

SFB1000/1500 Small Breakers

Blank-fire protection: Also known as Auto-Shut-Off; stops the breaker operation when the material has broken down or there is not sufficient down pressure on the breaker, preventing harmful blank blows.

Enclosed breaker housing: To reduce noise to allow use in restricted areas, and to protect the breaker hydraulics from damage.

Safety: Removes the operator from direct contact with the breaking work, protecting your worker or yourself from injury.

Shock isolation is standard: Heavy duty urethane members at the top and bottom of the breaker prevent harmful forces from being transferred to the host machine, protecting your investment.

Heavy duty Housing: Rugged and wear resistant to ensure durability even in the most abrasive and abusive applications.

Rotatable bushings: Provides multiple wear surfaces, which when used protect the breaker tool bit and bushing, reducing replacement requirements and cost.

StrikeForce adapter pattern: A common adapter pattern, with other StrikeForce tools in the same weight class, maximizes flexibility in use of adapter systems, minimize owning costs.

Flat-top adapter mounting: Gives the flexibility to use the breakers on multiple machines. Paladin has a complete line of adapters to suit backhoe loaders and small excavators, that support this breaker model. If customized adapter systems are required, Paladin can support with the industry's most extensive adapter product design capability.

All services and adjustment points are accessible without removing the breaker from the host machine: This allows the breaker to be serviced and adjusted while installed on the host carrier, no need to remove the breaker from the machine as required with some competitors.

SFB2K - SFB12K Medium & Large Breakers

Blank-fire protection: Also known as Auto-Shut-Off; stops the breaker operation when the material has broken down or there is not sufficient down pressure on the breaker, preventing harmful blank blows.

Lubrication: All StrikeForce medium and large breakers come standard with a breaker mounted lubrication system to simplify maintenance and protect the breaker, and breaker bits/tools, from failure.

Variable blow power/frequency: Gives the operator the ability to set the optimal combination of power and frequency to best suit the application.

Enclosed breaker housings: To reduce noise to allow use in restricted areas and to protect the breaker hydraulics from damage.

Shock isolation is standard: Heavy duty urethane members at the top and bottom of the breaker prevent harmful forces from being transferred to the host machine, protecting your investment.

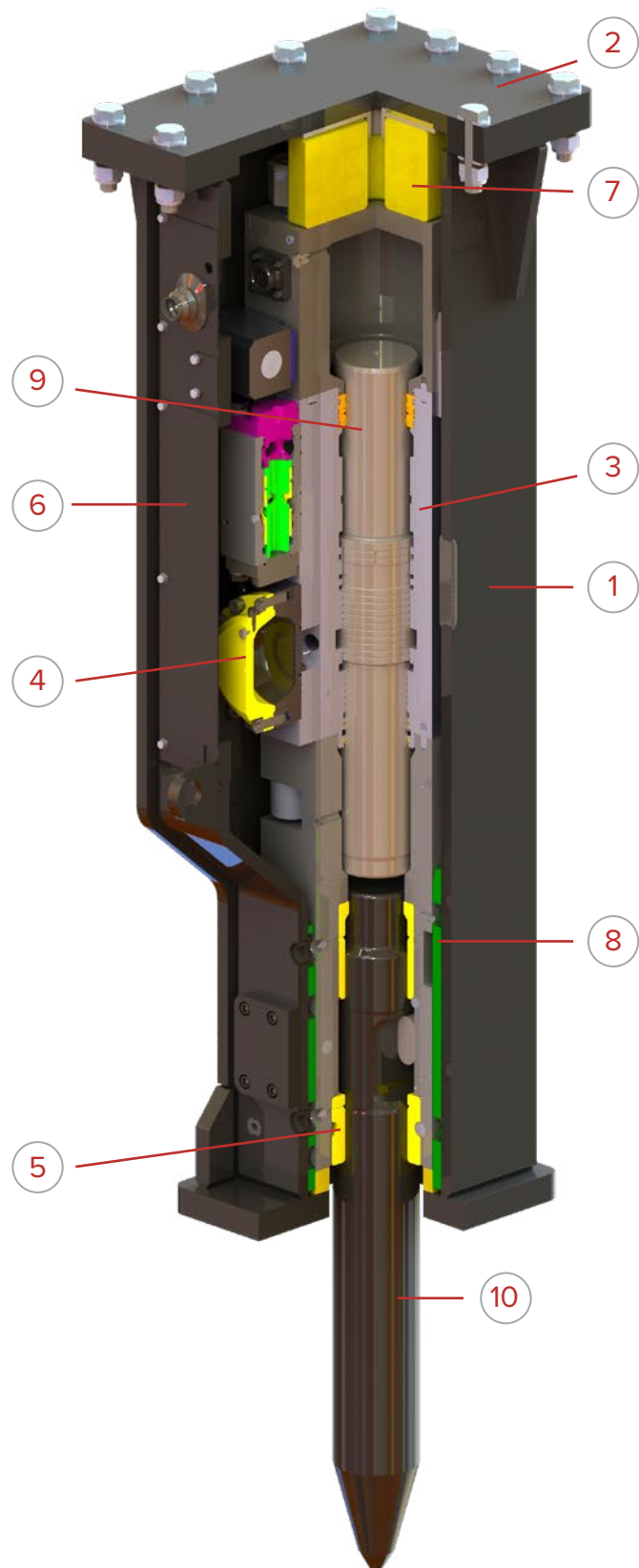
Rotatable bushings: Provides multiple wear surfaces, which when used protect the breaker tool bit and bushing, reducing replacement requirements and costs.

Heavy duty Housing: Rugged and wear resistant to ensure durability even in the most abrasive and abusive applications.

Flat-top adapter mounting: Gives the flexibility to use the breakers on multiple machines. Paladin CORE Adapters are available to support this range of breakers for installation onto Pin-Grabber couplers. If customized adapter systems are required, Paladin can support with the industry's most extensive adapter product line capability.

All services and adjustment points are accessible without removing the breaker from the host machine: This allows the breaker to be serviced and adjusted while installed on the host carrier, no need to remove the breaker from the machine as required with some competitors.

- ① **Heavy duty Housing:** Rugged and wear resistant to ensure durability even in the most abrasive and abusive applications.
- ② **Flat-top adapter mounting:** Gives the flexibility to use the breakers on multiple machines. Paladin Adapters are available to support this range of breakers. If customized adapter systems are required, Paladin can support with the industry's most extensive adapter product line capability.
- ③ **Hydraulic shock absorption:** The breaker design includes a hydraulic energy absorption system to reduce shocks being transmitted to the breaker and carrier, protecting both these investments.
- ④ **Hydraulic pulse protection (10K and 12K):** Provides additional hydraulic protection to the breakers that require large flow raises to absorb damaging hydraulic shock (line surge) within the breaker, protecting the host machines hydraulics.
- ⑤ **Rotatable bushings:** Provides multiple wear surfaces, which when used protect the breaker tool bit and bushing, reducing replacement requirements and costs.
- ⑥ **Fully enclosed housing (SFB1000-12K):** Reduces noise and protects hydraulics.
- ⑦ **Fully isolated:** To prevent shocks from being transferred to carrier, effectively protecting boom, cylinder and frame structure.
- ⑧ **Serviceable wear surfaces:** Simplify service and rebuild, reducing operating costs.
- ⑨ **Heavy piston:** To efficiently transfer power for breaking, reducing recoil, protecting the breaker and host machine.
- ⑩ **Large tool diameter:** To resist tool breakage due to less experienced operators or awkward work positions.



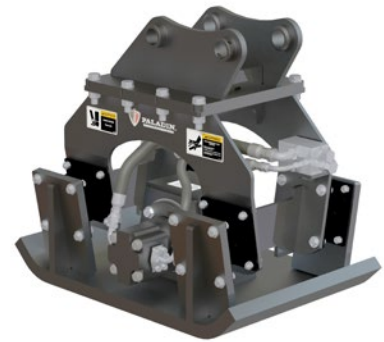
STRIKEFORCE TPC VIBRATORY PLATE COMPACTORS

COMPACT



TPC250, TPC350

SMALL



TPC1000

Paladin Boom Mounted TPC Plate Compactors provide the perfect combination of impulse force and frequency for handling trench and surface compaction needs. Each of the TPC models are focused on the needs of the contractor in road construction and repair, embankment preparation, utility and waste drain excavation backfill, as well as special needs in sheet, post, and plate driving for soil stabilization.

The TPC line of compactors provide features to enhance compaction effectiveness as well as to protect the owner's investment by limiting damaging forces resulting from operation and hydraulic impulses. Further, the TPC family is supported by the industry's largest dealer network and service expertise.

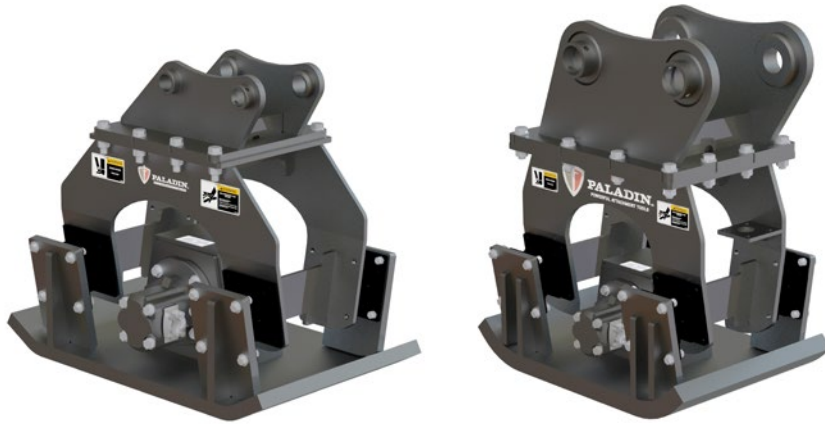


Angled Shock Isolator

Features

- "Outboard" shock isolator location provides stability for optimal transmission of impulse for effective compaction
- Shock isolators are angled to reduce damaging shear stresses in the isolator and extend life while providing a performance advantage in delivering compaction forces to the soil
- Integral Flow Control block manages flow and pressure to provide effective and repeatable compaction as well as to protect the hydraulic motor
- Oil bath bearing design maximizes bearing life while minimizing maintenance needs

MEDIUM



TPC2K, TPC4K

LARGE

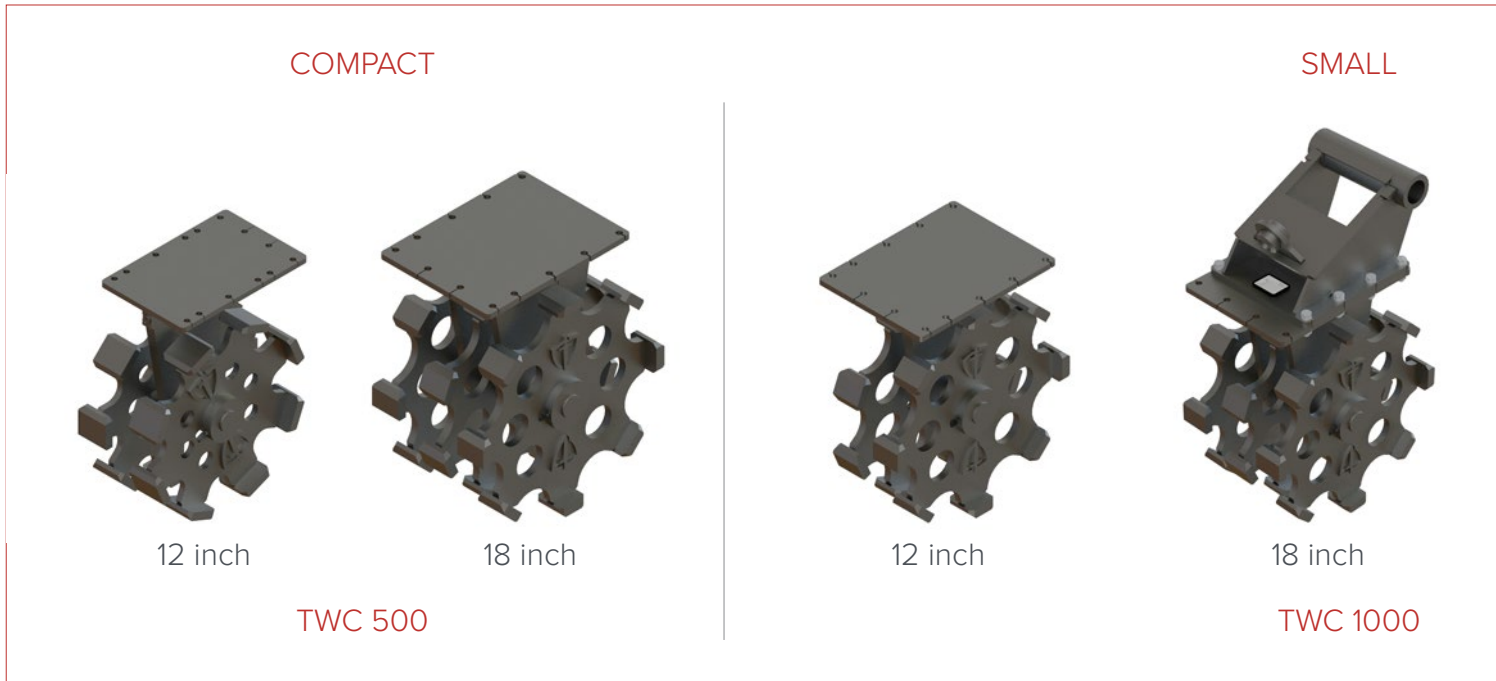


TPC10K

SPECIFICATIONS

	UNITS	TPC250	TPC350	TPC1000	TPC2K	TPC4K	TPC10K
Impulse Force	(lbs)	2500	3400	6400	8000	11350	22000
Operating Weight*	(lbs)	353	525	946	1300	1940	3450
Min Carrier Weight	(lbs)	5000	5000	9000	12000	16000	50000
Max Carrier Weight	(lbs)	10000	14000	28000	40000	50000	130000
Baseplate Width	(in)	11.75	18.75	23.5	24	25.5	33
Compaction Area	(in ²)	352.5	487.5	822.5	912	981.75	1633.5
Vibrations per Minute	(vpm)	2200	2200	2200	2200	2200	2200
Maximum Flow	(gpm)	25	25	25	40	60	70
Minimum Flow	(gpm)	9	12	12	24	28	40
Max Back Pressure	(psi)	250	250	250	250	250	250
Maximum Hose Size - Inlet	(in)	½	½	¾	¾	¾	¾
Minimum Hose Size - Inlet	(in)	½	½	¾	¾	¾	¾
Machine Class (mT)		3-5	3-8	5-12	5-15	8-20	20-60

STRIKEFORCE TWC WHEEL COMPACTOR



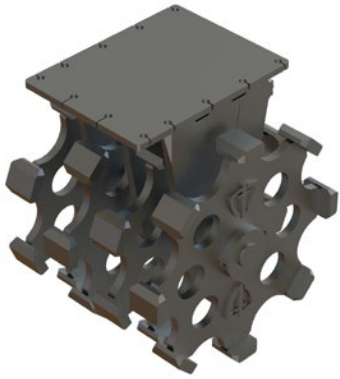
Paladin Boom Mounted TWC Compaction Wheels provide a cost effective, durable, and user friendly compaction method for use in most soils and trench conditions. Strikeforce TWC Compaction Wheels are very effective in consolidating and condensing clay or fine mechanically stable (separates with difficulty) soils where other compaction means are less effective. The TWC uses the machine force to compress columns of soil to achieve overall compaction, and unlike other compaction means this can be done in wet/soggy soil conditions.

The StrikeForce TWC family of Compaction Wheels includes advanced design features to maximize life and minimize maintenance cost, maximizing your return on investment. TWC Compaction Wheels do not require hydraulic connections to your machine protecting your primary investment, and require only minimal periodic maintenance to keep the product operational for years to come. As with all StrikeForce brand tools from Paladin they come with the most extensive dealer support network of any attachment supplier in the market.

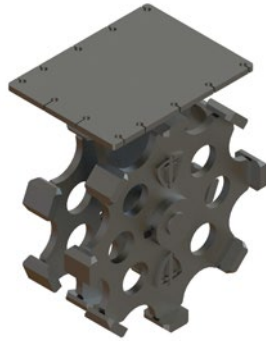
Features

- Extended Compaction Pad life through use of abrasion resistant Hardox 450 material.
- Enhanced durability through the use of an oversized axle shaft and large diameter bearings to minimize contact loads and lubrication requirement.
- Fully protected grease locations for use in abusive environments. These are not susceptible to damage in typical work environment as with competitor designs.
- Minimized maintenance through use of a large diameter greased zinc alloy bearing which also protects the axle shaft and housings from damage.
- All compaction wheels come standard with the Scraper Blade.

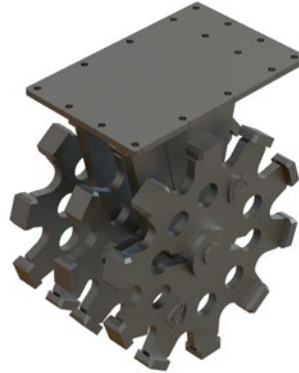
MEDIUM



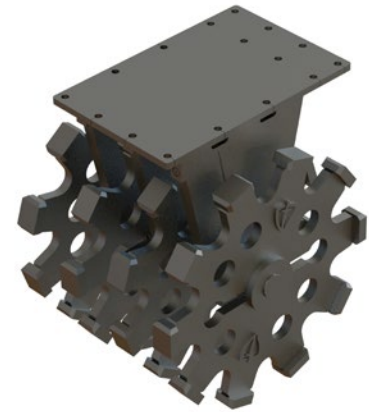
24 inch



18 inch



24 inch



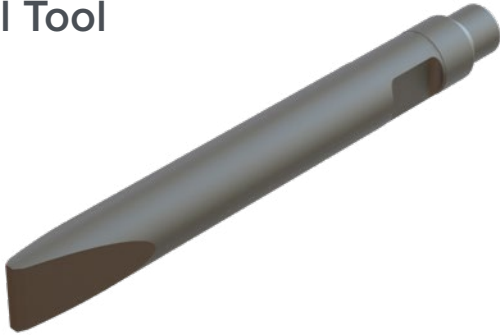
32 inch

TWC 4K

SPECIFICATIONS	MINI-EXCAVATORS		BACKHOE AND SMALL EXCAVATOR			MEDIUM EXCAVATOR		
	TWC 500-12	TWC 500-18	TWC 1000-12	TWC 1000-18	TWC 1000-24	TWC 4K-18	TWC 4K-24	TWC 4K-32
Trench Width (in.)	12	18	12	18	24	18	24	32
No. of Rims	2	3	2	3	4	2	3	4
Weight (lbs.)	320	460	520	740	980	1,470	1,870	2,460
Op Weight (lbs.)*	520	660	750	970	1,210	1,790	2,190	2,780
Wheel Diameter (in.)	22	22	28	28	28	38	38	38
Shaft Diameter (in.)	2.36	2.36	2.75	2.75	2.75	3.50	3.50	3.50
Foot Type	Hardox Pad		Hardox Pad			Hardox Pad		
Min Machine (lbs.)	2,700		13,000			37,000		
Max Machine (lbs.)	14,000		38,000			64,000		
Machine Class (mT)	1-5		5-15			15-27		

BREAKER TOOLS

Chisel Tool



Used in applications requiring penetration of medium to hard non-abrasive materials. This is a good general purpose tool!

Blunt Tool



Typically used in tough applications where the surface is unstable and where effective transfer of the impact shock wave is critical - including secondary boulder breaking or heavy concrete demolition. This tool has the lowest wear rate.

Moil Tool



Excellent when used in concrete demolition, and for breaking sedimentary material where a high penetration rate is required. This tool has low torsional loading to extend the life of other breaker components such as tool retainers. .

Special Tool

Available upon request.

	COMPACT	SMALL	MEDIUM	LARGE
Chisel Tool	✓	✓	P	P
Blunt Tool	✓	✓	✓	P
Moil Tool	P	P	✓	✓
Special Tool				

✓ – AVAILABLE
 P – PREFERRED FOR THIS BREAKER GROUP
 N – NOT AVAILABLE

PALADIN ADAPTERS

Single Position Flat Mount



Single position adapter for CTC and standard SAE SSL. Simple, durable, cost effective.

Multi-Position Pin Mount



Multi-position adapter for standard SAE SSL. Provides added flexibility in breaker orientation for working on surfaces with odd angles.

Flat Top



Traditional Pin-on adapter to suit most boom mounted machines. Includes pins.

Quick Hitch



Paladin has bracket designs for most industry quick hitch systems. Quick Hitch rely on geometry to secure the tool and don't require pins.

CORE



Paladin's pin grabber CORE mounting system adapts to most machines in a weight class. Reference machine make and model to select the correct offering.

Custom

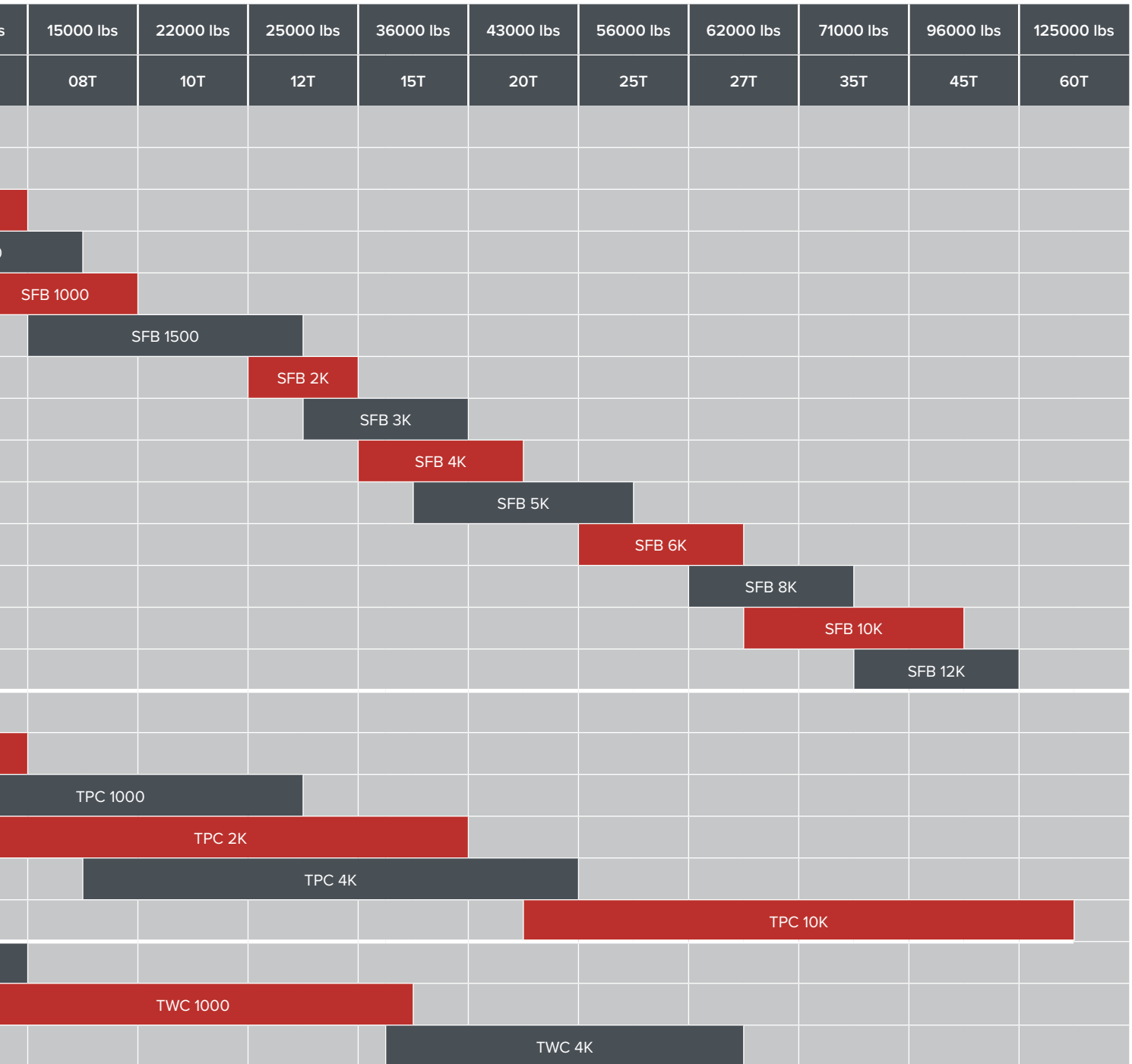


Paladin has industry leading design capability to provide custom adapter systems per customer request.

	COMPACT	SMALL	MEDIUM	LARGE
Single Position Flat Mount	✓	✓	N	N
Multi-Position Pin Mount	N	✓	N	N
Flat Top	✓	✓	✓	✓
Quick Hitch	✓	✓	✓	✓
CORE	N	N	P	P
Custom				

PRODUCT ALIGNMENT

Machine Weight			13000 lbs	18000 lbs	20000 lbs	2000 lbs	3500 lbs	5000 lbs	9000 lbs	
Machine Class	CTC	SSL/CTL	BHL			01T	02T	03T	05T	
SFB 250	SFB 250					SFB 250				
SFB 350	SFB 350						SFB 350			
SFB 500		SFB 500					SFB 500			
SFB 750		SFB 750						SFB 750		
SFB 1000			SFB 1000							
SFB 1500				SFB 1500						
SFB 2K					SFB 2K					
SFB 3K										
SFB 4K										
SFB 5K										
SFB 6K										
SFB 8K										
SFB 10K										
SFB 12K										
TPC 250	N/A	N/A						TPC 250		
TPC 350			TPC 350					TPC 350		
TPC 1000			TPC 1000							
TPC 2K				TPC 2K						
TPC 4K										
TPC 10K										
TWC 500	N/A	N/A	TWC 500				TWC 500			
TWC 1000			TWC 1000							
TWC 4K										



**SELECTION.
INNOVATION.
PERFORMANCE.**



PALADIN®