



PALADIN
MCMILLEN

AUGERS DRIVES

**Selection,
Innovation,
Performance**

Your One-Stop Shop
for Hydraulic Tools
and Attachments





The **McMillen® Auger Drives** by Paladin, feature a wide variety of auger diameters, lengths and style for every digging application. Comes with various mounts available for most applications.

- 5 to 60 GPM available
- Extensions available for deeper digging
- Augers available up to 48" diameter
- Planetary reduction auger drives
- 2 speed auger drives available
- Fully welded flighting for added auger strength

AUGER DRIVES - D450, X900, X1500

D450 Features:

- Direct drive
- Maximum output torque 704 lb-ft.
- 12" maximum auger diameter
- 2" round output shaft

X900 Features:

- Available for mini loaders
- Maximum output torque 1,029 lb-ft.
- 2-9/16" round output shaft
- Dual pivot with lockout pin to single pivot
- Maximum 3,000 PSI
- 15" maximum auger diameter

X1500 Features:

- Available for mini loaders
- Maximum output torque 1,998 lb-ft.
- 2-9/16" round output shaft
- Dual pivot with lockout pin to single pivot
- Maximum 3,000 PSI
- 30" maximum auger diameter

SPECIFICATIONS	D450	
Maximum auger diameter	12"	305 mm
Minimum hydraulic flow	5 GPM	19 LPM
Maximum hydraulic flow	10 GPM	38 LPM
Maximum Continuous Operating PSI	3000 PSI	207 bar
Output shaft options	2" round	51 mm

SPECIFICATIONS	X900 (PLANETARY)	
Maximum auger diameter	15"	381 mm
Minimum hydraulic flow	8 GPM	23 LPM
Maximum hydraulic flow	16 GPM	57 LPM
Maximum Continuous Operating PSI	3000 PSI	207 bar
Output shaft options	2 9/16" round	65 mm

SPECIFICATIONS	X1500 (PLANETARY)	
Maximum auger diameter	30"	762 mm
Minimum hydraulic flow	8 GPM	30 LPM
Maximum hydraulic flow	16 GPM	61 LPM
Maximum Continuous Operating PSI	3000 PSI	207 bar
Output shaft options	2 9/16" round	65 mm

OUTPUT SPEED		
FLOW	SPEED	
5 GPM	19 LPM	65 RPM
6 GPM	23 LPM	78 RPM
7 GPM	26 LPM	91 RPM
8 GPM	30 LPM	104 RPM
9 GPM	34 LPM	117 RPM
10 GPM	38 LPM	130 RPM

OUTPUT SPEED		
FLOW	SPEED	
8 GPM	30 LPM	61 RPM
10 GPM	38 LPM	76 RPM
12 GPM	45 LPM	91 RPM
14 GPM	53 LPM	106 RPM
16 GPM	61 LPM	121 RPM

OUTPUT TORQUE			
PRESSURE		TORQUE	
2000 PSI	138 BAR	470 lb. ft.	637 N. m.
2500 PSI	172 BAR	587 lb. ft.	796 N. m.
3000 PSI	207 BAR	516 lb. ft.	700 N. m.

OUTPUT TORQUE			
PRESSURE		TORQUE	
2000 PSI	138 BAR	671 lb. ft.	910 N. m.
2500 PSI	172 BAR	849 lb. ft.	1151 N. m.
3000 PSI	207 BAR	1029 lb. ft.	1395 N. m.

Output speed and torque specifications are based on theoretical values and are provided for comparative purposes only.



AUGER DRIVES - 75D SERIES

All 75D Series hydraulic motor drives the auger through a sealed planetary gear reduction. The heavy duty all gear design gives these units a long life with minimal maintenance and service costs. 75D Series drive units are completely sealed with all moving components running in oil for total lubrication on a constant basis. All models feature reverse rotation for quick backout when obstructions are encountered.



SPECIFICATIONS	X975D	
Maximum auger diameter	24"	610 mm
Minimum hydraulic flow	6 GPM	30 LPM
Maximum hydraulic flow	15 GPM	57 LPM
Max. Continuous Operating PSI	3500 PSI	241 bar
Output shaft options	2 9/16" round, and 2" hex	65 mm, 51 mm

OUTPUT SPEED		
	FLOW	SPEED
	6 GPM	23 LPM
	8 GPM	30 LPM
	10 GPM	38 LPM
	12 GPM	45 LPM
	15 GPM	57 LPM
		23 RPM
		30 RPM
		38 RPM
		45 RPM
		57 RPM

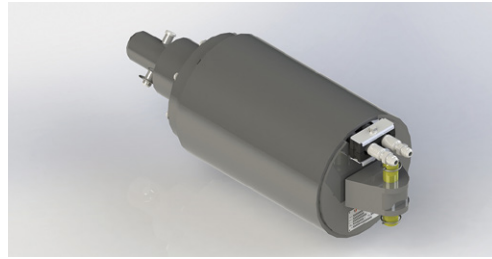
OUTPUT TORQUE			
PRESSURE		TORQUE	
2000 PSI	141 BAR	1000 ft. lbs.	1356 N. m.
2500 PSI	176 BAR	1277 ft. lbs.	1731 N. m.
3000 PSI	211 BAR	1500 ft. lbs.	2034 N. m.
3500 PSI	241 BAR	1713 ft. lbs.	2330 N. m.

SPECIFICATIONS	X1475D	
Maximum auger diameter	30"	762 mm
Minimum hydraulic flow	10 GPM	38 LPM
Maximum hydraulic flow	25 GPM	95 LPM
Max. Continuous Operating PSI	3500 PSI	241 bar
Output shaft options	2 9/16" round, and 2" hex	65 mm, 51 mm

OUTPUT SPEED		
	FLOW	SPEED
	10 GPM	38 LPM
	12 GPM	45 LPM
	14 GPM	53 LPM
	15 GPM	61 LPM
	20 GPM	76 LPM
	25 GPM	95 LPM
		40 RPM
		49 RPM
		57 RPM
		61 RPM
		79 RPM
		104 RPM

OUTPUT TORQUE			
PRESSURE		TORQUE	
2000 PSI	138 BAR	1600 ft. lbs.	2169 N. m.
2500 PSI	172 BAR	2000 ft. lbs.	2712 N. m.
3000 PSI	207 BAR	2377 ft. lbs.	3223 N. m.
3500 PSI	241 BAR	2630 ft. lbs.	3577 N. m.

Output speed and torque specifications are based on theoretical values and are provided for comparative purposes only. Specifications and design are subject to change without notice and without liability, therefore, whenever applicable specifications are in accordance with SAE standards.



SPECIFICATIONS X1975D		
Maximum auger diameter	36"	914 mm
Minimum hydraulic flow	15 GPM	57 LPM
Maximum hydraulic flow	30 GPM	114 LPM
Max. Continuous Operating PSI	3500 PSI	241 bar
Output shaft options	2 9/16" round, and 2" hex	65 mm, 51 mm

SPECIFICATIONS X2475D		
Maximum auger diameter	36"	914 mm
Minimum hydraulic flow	20 GPM	76 LPM
Maximum hydraulic flow	35 GPM	132 LPM
Max. Continuous Operating PSI	3500 PSI	241 bar
Output shaft options	2 9/16" round, and 2" hex	65 mm, 51 mm

SPECIFICATIONS X3575		
Maximum auger diameter	48"	914 mm
Minimum hydraulic flow	24 GPM	76 LPM
Maximum hydraulic flow	30 GPM	114 LPM
Max. Continuous Operating PSI	2500 PSI	172 bar
Output shaft options	2" hex	51 mm

OUTPUT SPEED		
FLOW		SPEED
15 GPM	57 LPM	53 RPM
18 GPM	68 LPM	63 RPM
20 GPM	76 LPM	70 RPM
24 GPM	91 LPM	84 RPM
28 GPM	106 LPM	98 RPM
30 GPM	114 LPM	106 RPM

OUTPUT SPEED		
FLOW		SPEED
20 GPM	76 LPM	56 RPM
22 GPM	83 LPM	61 RPM
24 GPM	91 LPM	67 RPM
26 GPM	98 LPM	73 RPM
28 GPM	106 LPM	78 RPM
30 GPM	114 LPM	84 RPM
35 GPM	132 LPM	98 RPM

OUTPUT SPEED		
FLOW		SPEED
24 GPM	91 LPM	45 RPM
27 GPM	102 LPM	50 RPM
30 GPM	114 LPM	78 RPM

OUTPUT TORQUE			
PRESSURE		TORQUE	
2000 PSI	138 BAR	1856 ft. lbs.	2516 N. m.
2500 PSI	172 BAR	2328 ft. lbs.	3156 N. m.
3000 PSI	207 BAR	2769 ft. lbs.	3754 N. m.
3500 PSI	241 BAR	3044 ft. lbs.	4140 N. m.

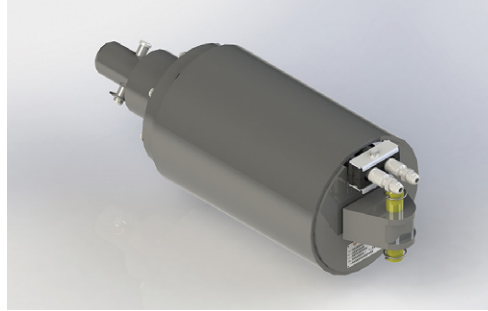
OUTPUT TORQUE			
PRESSURE		TORQUE	
2000 PSI	138 BAR	2308 lb. ft.	3129 N. m.
2500 PSI	172 BAR	2895 lb. ft.	3925 N. m.
3000 PSI	207 BAR	3451 lb. ft.	4686 N. m.
3500 PSI	241 BAR	3821 ft. lbs.	5196 N. m.

OUTPUT TORQUE			
PRESSURE		TORQUE	
2500 PSI	172 BAR	3566 lb. ft.	4834 N. m.
3000 PSI	207 BAR	4279 lb. ft.	5801 N. m.

Output speed and torque specifications are based on theoretical values and are provided for comparative purposes only.

2-SPEED DRIVE - 3K2 & 8K2

The 3K2 - 2 speed auger drive offers one drive for maximum productivity in changing soil and job site conditions and up to twice the productivity of single speed drives for less than 20% initial additional investment. Designed for digging fence posts fast - allows for quick clean out and on to the next hole.



SPECIFICATIONS 3K2

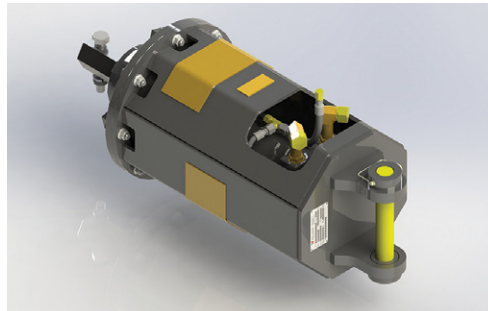
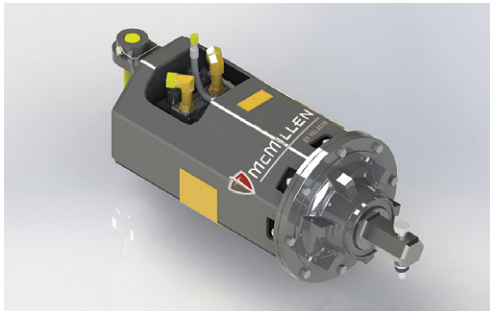
Maximum auger diameter	36"	914 mm
Minimum hydraulic flow	10 GPM	38 LPM
Maximum hydraulic flow	25 GPM	95 LPM
Maximum Continuous Operating PSI	3000 PSI	207 bar
Output shaft options (manual and electric shift available)	2 9/16" round, and 2" hex	65 mm, 51 mm

OUTPUT SPEED

FLOW		SPEED
HIGH SPEED / LOW TORQUE		
15 GPM	57 LPM	59 RPM
20 GPM	76 LPM	81 RPM
LOW SPEED / HIGH TORQUE		
15 GPM	57 LPM	37 RPM
20 GPM	76 LPM	48 RPM

OUTPUT TORQUE

PRESSURE		TORQUE	
HIGH SPEED / LOW TORQUE			
3000 PSI	207 BAR	2053 lb. ft.	2784 N.m.
3000 PSI	207 BAR	2053 lb. ft.	2784 N.m.
LOW SPEED / SPEED TORQUE			
3000 PSI	207 BAR	2923 lb. ft.	3963 N.m.
3000 PSI	207 BAR	2923 lb. ft.	3963 N.m.



SPECIFICATIONS 8K2

Maximum auger diameter	48"	762 mm
Minimum hydraulic flow	30 GPM	38 LPM
Maximum hydraulic flow	45 GPM	95 LPM
Maximum Continuous Operating PSI	3800 PSI	241 bar
Output shaft options	2.5" hex	65 mm, 51 mm

OUTPUT SPEED

LOW SPEED		HIGH SPEED	
FLOW	SPEED	FLOW	SPEED
30 GPM	33 RPM	30 GPM	49 RPM
35 GPM	38 RPM	35 GPM	57 RPM
45 GPM	49 RPM	45 GPM	73 RPM

OUTPUT TORQUE

LOW SPEED		HIGH SPEED	
PRESSURE	TORQUE	PRESSURE	TORQUE
3500 PSI	9092 lb. ft.	3500 PSI	6061 lb. ft.
3770 PSI	9793 lb. ft.	3770 PSI	6529 lb. ft.
5000 PSI	9793 lb. ft.	5000 PSI	6529 lb. ft.

Output speed and torque specifications are based on theoretical values and are provided for comparative purposes only.

HIGH FLOW HIGH HP

SPECIFICATIONS X4075	
Maximum auger diameter	48"
Minimum hydraulic flow	24 GPM
Maximum hydraulic flow	32 GPM
Maximum Continuous Operating PSI	4000 PSI
Maximum Working Back Pressure	300 PSI
Output shaft options	2" hex

OUTPUT SPEED	
FLOW	SPEED
24 GPM	59 RPM
28 GPM	78 RPM
30 GPM	98 RPM
32 GPM	78 RPM

OUTPUT TORQUE			
PRESSURE		TORQUE	
2500 PSI	172 BAR	3155 lb. ft.	4278 N. m.
3000 PSI	207 BAR	3786 lb. ft.	5133 N. m.
3500 PSI	241 BAR	4417 lb. ft.	5989 N. m.
3000 PSI	207 BAR	5048 lb. ft.	6844 N. m.

SPECIFICATIONS X4575*	
Maximum auger diameter	48"
Minimum hydraulic flow	22 GPM
Maximum hydraulic flow	36 GPM
Maximum Continuous Operating PSI	4000 PSI
Maximum Working Back Pressure	300 PSI
Output shaft options	2" hex

OUTPUT SPEED	
FLOW	SPEED
22 GPM	43 RPM
36 GPM	71 RPM

OUTPUT TORQUE			
PRESSURE		TORQUE	
3000 PSI	207 BAR	4660 lb. ft.	6318 N. m.
3500 PSI	241 BAR	5437 lb. ft.	7371 N. m.

*No Case Drain required

SPECIFICATIONS X5075	
Maximum auger diameter	48"
Minimum hydraulic flow	28 GPM
Maximum hydraulic flow	40 GPM
Maximum Continuous Operating PSI	3500 PSI
Maximum Working Back Pressure	300 PSI
Output shaft options	2" hex

OUTPUT SPEED	
FLOW	SPEED
28 GPM	59 RPM
34 GPM	72 RPM
40 GPM	85 RPM

OUTPUT TORQUE			
PRESSURE		TORQUE	
2500 PSI	172 BAR	3260 lb. ft.	4420 N. m.
3000 PSI	207 BAR	4345 lb. ft.	5891 N. m.
3500 PSI	241 BAR	5096 lb. ft.	6909 N. m.

SPECIFICATIONS X6075	
Maximum auger diameter	48"
Minimum hydraulic flow	30 GPM
Maximum hydraulic flow	53 GPM
Maximum Continuous Operating PSI	3500 PSI
Maximum Working Back Pressure	300 PSI
Output shaft options	2" hex / 2 1/2" hex

OUTPUT SPEED	
FLOW	SPEED
30 GPM	51 RPM
42 GPM	72 RPM
53 GPM	90 RPM

OUTPUT TORQUE			
PRESSURE		TORQUE	
2500 PSI	172 BAR	4531 lb. ft.	6143 N. m.
3000 PSI	207 BAR	5437 lb. ft.	7372 N. m.
3500 PSI	241 BAR	6343 lb. ft.	8600 N. m.

SPECIFICATIONS X8075	
Maximum auger diameter	48"
Minimum hydraulic flow	36 GPM
Maximum hydraulic flow	54 GPM
Maximum Continuous Operating PSI	3500 PSI
Maximum Working Back Pressure	300 PSI
Output shaft options	2 1/2" hex

OUTPUT SPEED	
FLOW	SPEED
36 GPM	42 RPM
45 GPM	53 RPM
54 GPM	64 RPM

OUTPUT TORQUE			
PRESSURE		TORQUE	
2500 PSI	172 BAR	6493 lb. ft.	8803 N. m.
3000 PSI	207 BAR	7791 lb. ft.	10563 N. m.
3500 PSI	241 BAR	9090 lb. ft.	12324 N. m.

Output speed and torque specifications are based on theoretical values and are provided for comparative purposes only.

**SELECTION.
INNOVATION.
PERFORMANCE.**



PALADIN®