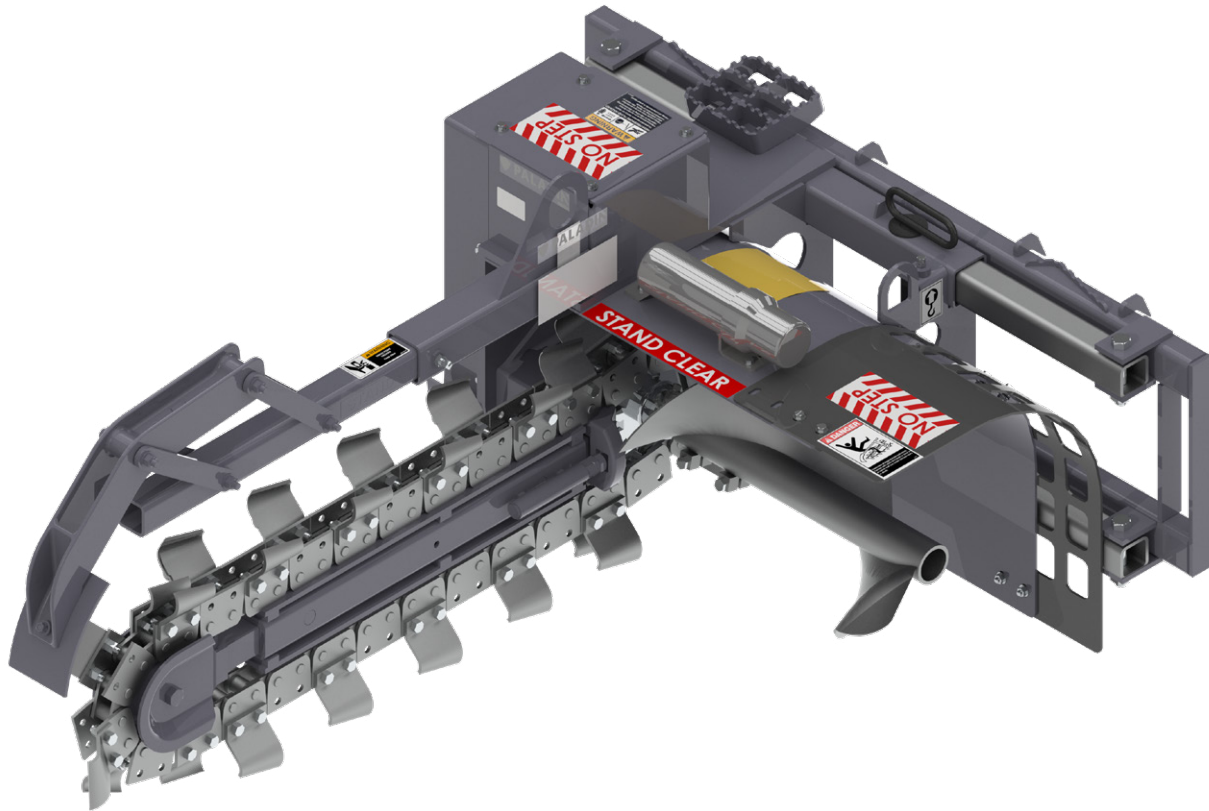




PALADIN®

BRADCO

www.paladinattachments.com



625 SERIES TRENCHERS

FOR SKID STEER LOADERS

The Paladin® 625 Trenchers include fixed-length booms equipped with a self-adjusting idler that has full rock guards and spring-loaded mechanisms.

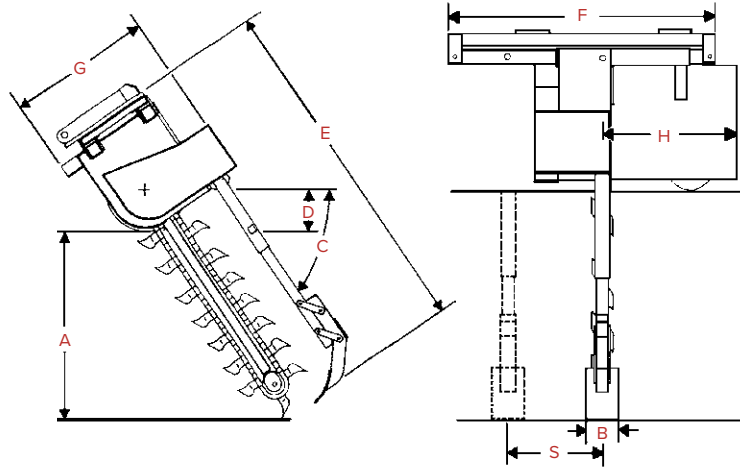
625 SERIES TRENCHERS

FOR SKID STEER LOADERS

FEATURES

- Heavy-duty boom & crumber with replaceable wear strips
- Enables a snug fit with single-side spoil augering
- Replaces dedicated machines at a fraction of the cost
- Several tooth options available
 - CUP
 - SHARK
 - ROCK & FROST
- Equipped with a 50,000 lb 2" anti-back flex-chain, which allows for versatile tooth patterns, making it suitable for various soil types and conditions
- Two position manual side shift mounting with optional infinite position using hydraulic side shift cylinder assembly

SPECIFICATIONS



BOOM SIZE	30 IN.	36 IN.	42 IN.	48 IN.
A. TRENCH DEPTH WITH AUGER AT 65° DIGGING ANGLE	30 IN. / 762 MM	36 IN. / 914 MM	42 IN. / 1067 MM	48 IN. / 1219 MM
B. CHAIN WIDTHS	6, 8, 10, 12 IN. / 152, 203, 254, 304 MM	6, 8, 10 IN. / 152, 203, 254 MM	6, 8, 10 IN. / 152, 203, 254 MM	6, 8 IN. / 152, 203 MM
C. RECOMMENDED TRENCHING ANGLE	65°	65°	65°	65°
D. HEADSHAFT HEIGHT (AUGER TOUCHING GROUND)	8 IN. / 203 MM	8 IN. / 203 MM	8 IN. / 203 MM	8 IN. / 203 MM
E. OVERALL LENGTH	66 IN. / 1676 MM	73 IN. / 1854 MM	79 IN. / 2007 MM	86 IN. / 2184 MM
F. OVERALL WIDTH	53 IN. / 1346 MM	53 IN. / 1346 MM	53 IN. / 1346 MM	53 IN. / 1346 MM
G. OVERALL HEIGHT	32 IN. / 813 MM	32 IN. / 813 MM	32 IN. / 813 MM	32 IN. / 813 MM
H. SPOIL DISCHARGE REACH	18 IN. / 457 MM	18 IN. / 457 MM	18 IN. / 457 MM	18 IN. / 457 MM
S. SIDE SHIFT, RIGHT OF CENTER	17 IN. / 432 MM	17 IN. / 432 MM	17 IN. / 432 MM	17 IN. / 432 MM

HYDRAULIC SYSTEM

GPM REQUIREMENTS

14 - 22 GPM / 53 - 83 LPM

OPERATING PRESSURE

2000 - 3000 PSI / 138 - 207 BAR

APPROX. SHIPPING WEIGHT WITH 3 IN. X 6 IN. -
24 PITCH ANTI-BACK-FLEX CHAIN

1040 LBS / 472 KG



2800 N. Zeeb Road // Dexter, MI 48130 // 833-723-1843 // www.paladinattachments.com