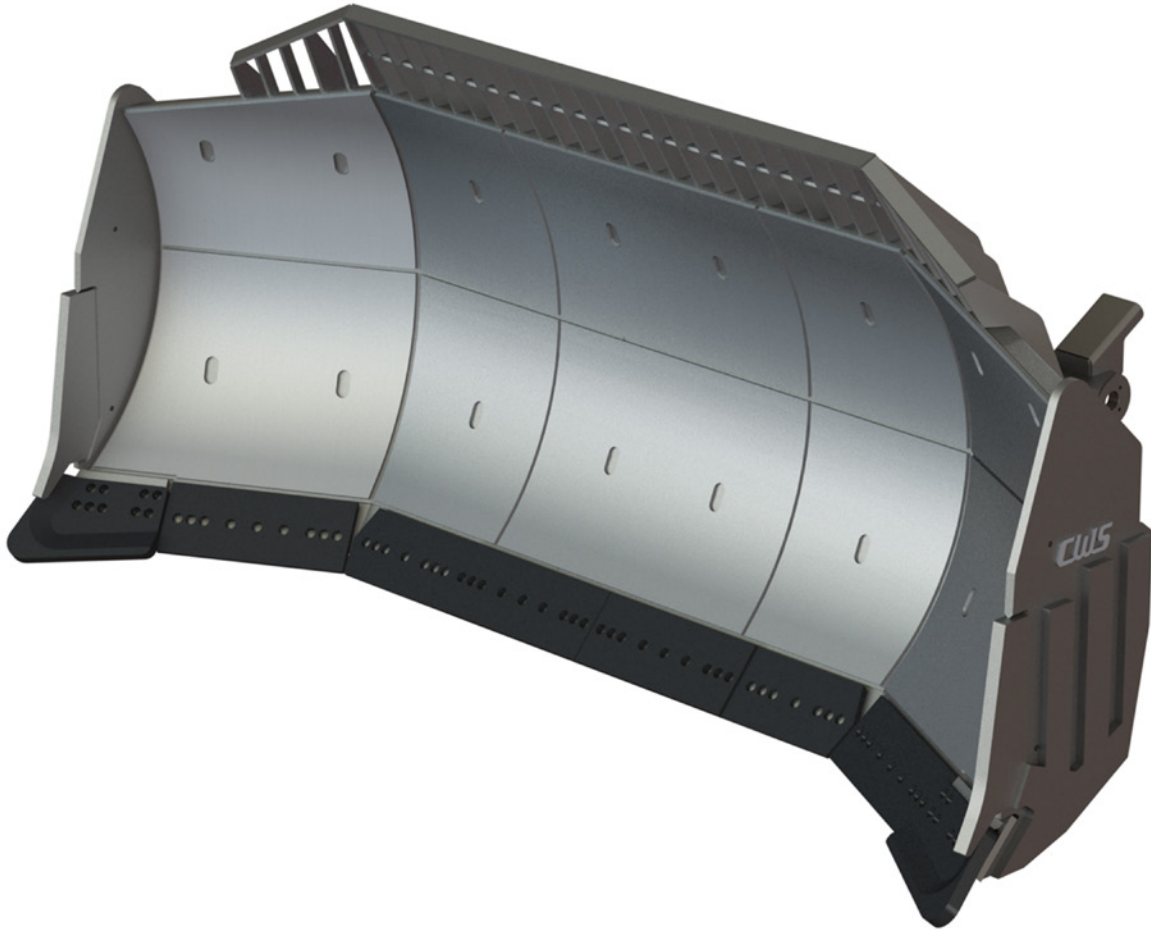




**CWS**  
— BY PALADIN

[www.paladinattachments.com](http://www.paladinattachments.com)



## DOZER BLADES

CWS High Production Dozer Blades' rugged and proven design delivers the assurance you need to maximize production. CWS Blades are extremely durable and available with high-grade liner wear packages. These blades are rigorously designed and manufactured with the utmost quality to stand up to the most aggressive mining applications. Our blades are designed to fill quickly and move more material with each pass.

# CWS DOZER BLADES

## FEATURES & BENEFITS

- CWS Uni-Joint Push Group for Improve Service Live Available on Select Caterpillar and Komatsu Machines or Direct Fit with OEM Push Group
- Higher Capacity than Factory Blades to Increase Productivity
- Extreme Wear Properties to Maximize Life Cycle and Uptime
- Suitable for Multiple Applications
- Custom Design Geometry allows for Load & Carry Benefits
- Increased Fuel Efficiency and Productivity
- Applications Spanning Rock, Coal Seam Reclamation, Stripping, and Overburden

## SPECIFICATIONS

	CD100	CD120	CD130
<b>WIDTH</b>	190 IN.	208 IN.	248 IN., 272 IN.
<b>STYLE</b>	SEMI-U	FULL-U	SEMI-U
<b>PACKAGE</b>	PRODUCTION	PRODUCTION	PRODUCTION
<b>CAPACITY</b>	12.5 YD <sup>3</sup>	28.8 YD <sup>3</sup>	45, 60 YD <sup>3</sup>
<b>APPROX. WEIGHT</b>	9,000 LBS	18,500 LBS	31,000 LBS
<b>(A) BLADE WIDTH</b>	182.5 IN.	207 IN.	248.5 IN.
<b>(B) BLADE HEIGHT</b>	68.75 IN.	107 IN.	124.69 IN.
<b>(C) BLADE DEPTH</b>	41.5 IN.	83.25 IN.	99.5 IN.

